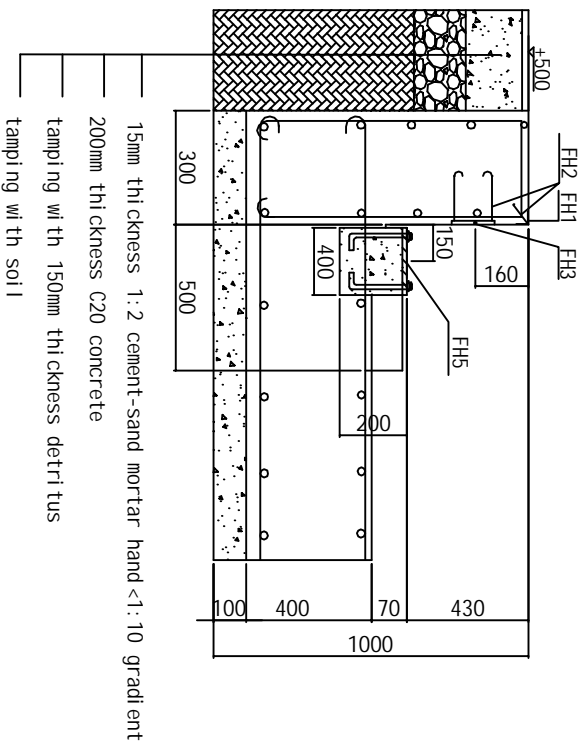


Design	Audit	Shanhe Scale Co., Ltd.	
Draw	Audited	SCS-3.2 m x 18 m	Page 2
Correct	Date	Pitless Foundation Draw	Page 1

## M-M1 Cutaway Drawing

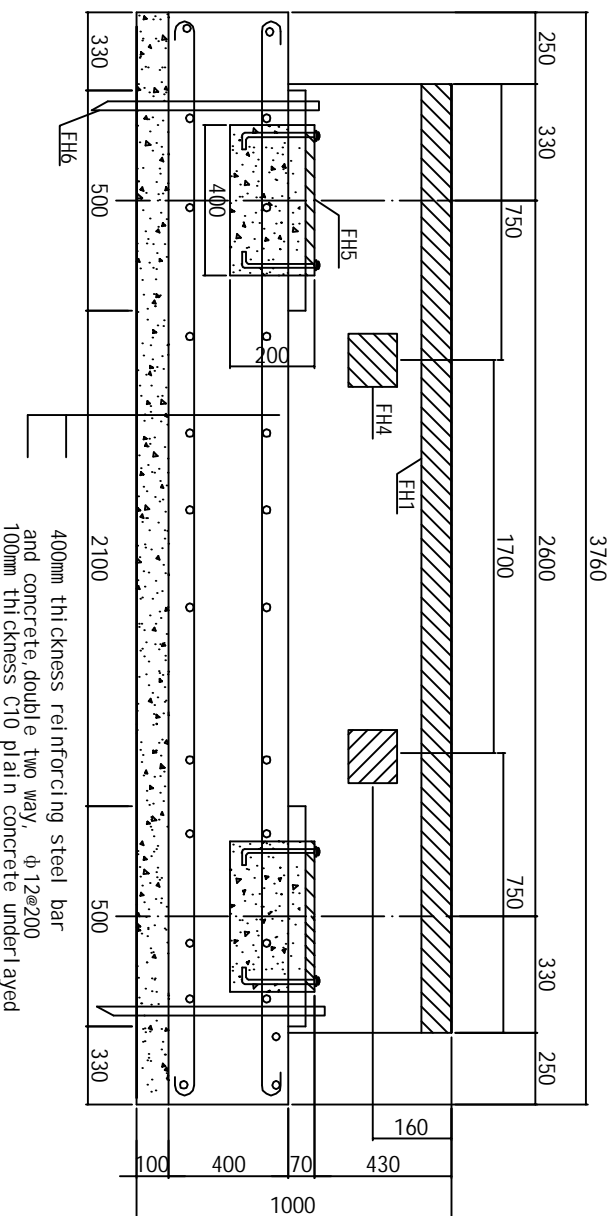


- 15mm thickness 1:2 cement-sand mortar hand <1:10 gradient
- 200mm thickness C20 concrete
- tamping with 150mm thickness detritus
- tamping with soil

### Remark

Symbol	Symbol	Explanation
	FH1	square steel (50 * 50 * 5mm)
	FH2	100xØ 8 round steel bended to hooks
	FH3	Limit board (6*150*150mm) welding 4PCS FH2
	FH4	Specification of Limit board same as FH3 embedding 4PCS
	FH5	16*300*300mm of load-bearing plate welding 4 PCS M4*150 bolt to fix
	FH6	Conductive pole, dimension $\geq \phi 12$ , length $\geq 1250$ mm

## M-M2 Cutaway Drawing



- 400mm thickness reinforcing steel bar and concrete, double two way,  $\phi 12 @ 200$
- 100mm thickness C10 plain concrete underlaid

- 1 All figures in the pictures are millimeter for the unit, height of natural floor  $\pm 0$
- 2 Designed foundation bearing capacity  $\geq 60 \text{kn/m}^2$
- 3 Concrete  $\pm \text{C20}$ , "Hoop steel" of reinforcing steel bar should be round steel, others whorl steel, underlay C10 concrete 100mm thickness
- \* 4 Reinforce foundation according to carrying capacity of local soil and water level to avoid the foundation to go down, our pictures are just for your reference.
- 5 Relative error of centre of each bearing plate (front and back, left and right, diagonal)  $\leq 10$ mm
- 6 Surface of every bearing plate at the same level, error  $\leq 3$ mm, suggesting bearing plates irrigated twice to keep accuracy.
- 7 Embedding hollow plastic pipes at the same time with foundation construction.
- 8 The foundation place should be higher in the middle, lower at both sides to facilitate drainage (suggesting drainage holes use  $\phi 150$  pipes' single-hole or porous)
- 9 Conductive pole embedded next to foundation, and some buried near the pound house, indicator separately grounding (dimension of conductive pole  $\geq \phi 12$ , depth of embedding  $\geq 1200$ mm, outer from cement ground 50mm).

Design		Shanhe Scale Co. Ltd.	
Draw		Audited	SCS- 3.2 m x 18 m
Correct		Date	Pitless Foundation Draw
			Page 2