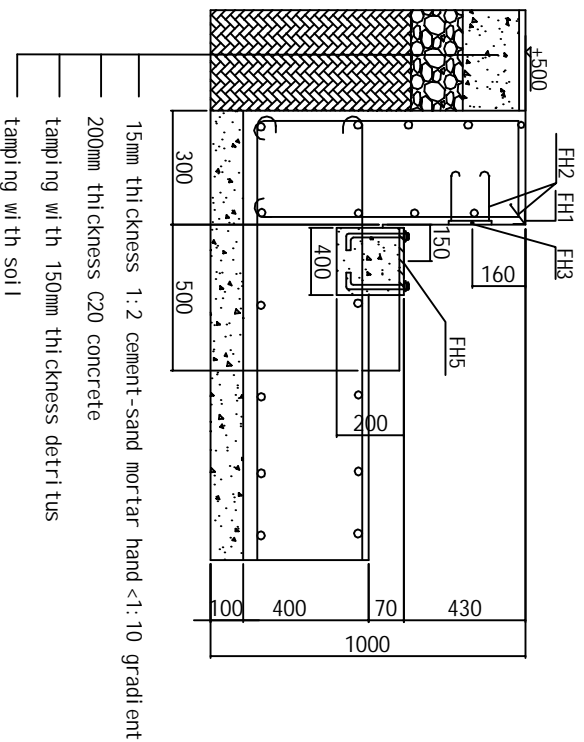


Design	Audit	Shanhe Scale Co.Ltd.	
Draw	Audited	SCS- 3.2 m x 16 m	Page 2
Correct	Date	Pitless Foundation Draw	Page 1

M-M1 Cutaway Drawing

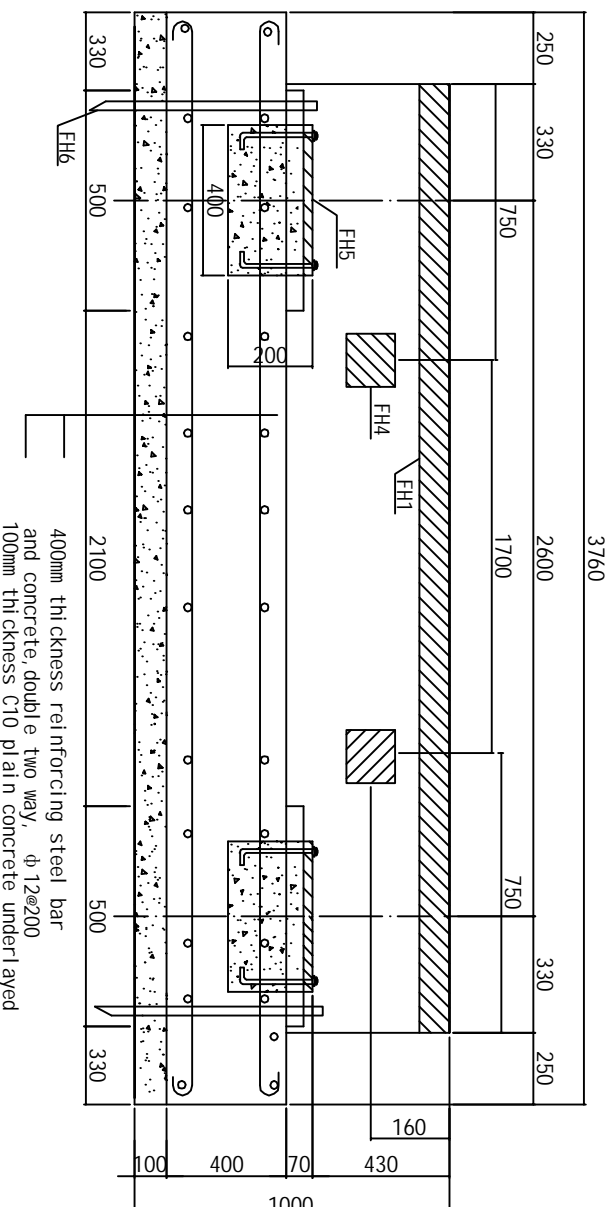


15mm thickness 1:2 cement-sand mortar hand <1:10 gradient
 200mm thickness C20 concrete
 tamping with 150mm thickness detritus
 tamping with soil

Remark

Symbol	Symbol	Explanation
	FH1	square steel (50*50*5mm)
	FH2	100xØ 8 round steel bended to hooks
	FH3	Limit board (6*150*150mm) welding 4PCS FH2
	FH4	Specification of limit board same as FH3 embedding 4PCS
	FH5	16*300*300mm of load-bearing plate welding 4 PCS M4*150 bolt to fix
	FH6	Conductive pole, dimension ≥φ12, length ≥1250mm

M-M2 Cutaway Drawing



400mm thickness reinforcing steel bar
 and concrete, double two way, φ12@200
 100mm thickness C10 plain concrete underlaid

- All figures in the pictures are millimeter for the unit, height of natural floor ±0
- Designed foundation bearing capacity $\geq 60\text{kn/m}^2$
- Concrete ± C20, "Hoop steel" of reinforcing steel bar should be round steel, others whorl steel, underlay C10 concrete 100mm thickness
- Reinforce foundation according to carrying capacity of local soil and water level to avoid the foundation to go down, our pictures are just for your reference.
- Relative error of centre of each bearing plate (front and back, left and right, diagonal) $\leq 10\text{mm}$
- Surface of every bearing plate at the same level, error $\leq 3\text{mm}$, suggesting bearing plates irrigated twice to keep accuracy.
- Embedding hollow plastic pipes at the same time with foundation construction.
- The foundation place should be higher in the middle, lower at both sides to facilitate drainage (suggesting drainage holes use φ150 pipes' single-hole or porous)
- Conductive pole embedded next to foundation, and some buried near the pound house, indicator separately grounding (dimension of conductive pole $\geq \phi 12$, depth of embedding $\geq 1200\text{mm}$, outer from cement ground 50mm).

Design		Shanhe Scale Co. Ltd.	
Draw		Audited	SCS- 3.2 m x 16 m
Correct		Date	Pitless Foundation Draw
			Page 2