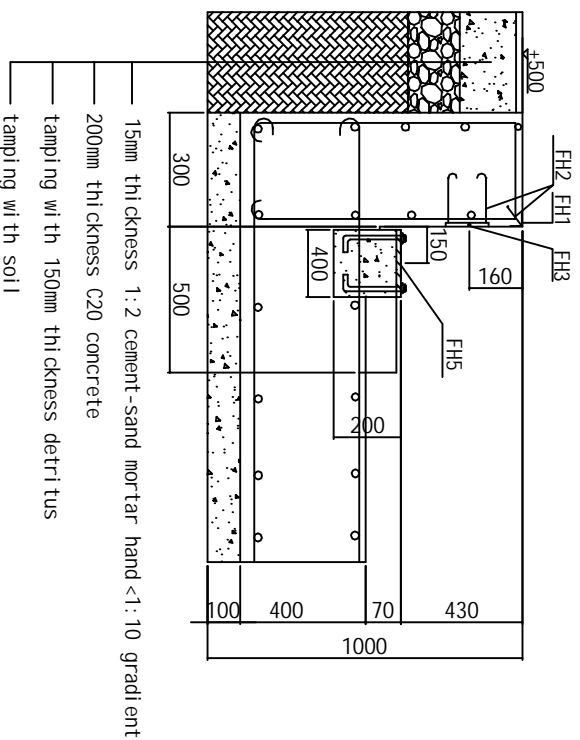


nozzle not shutted by cement, water forbidden coming into pipes.
 reserve one steel wire in the pipe to facilitate threading

Design	Audit	Shanhe Scale Co.Ltd.	
Draw	Auditted	SCS- 3m x 18m	
Correct	Date	Pitless Foundation Draw	
			Page 1

M-M1 Cutaway Drawing

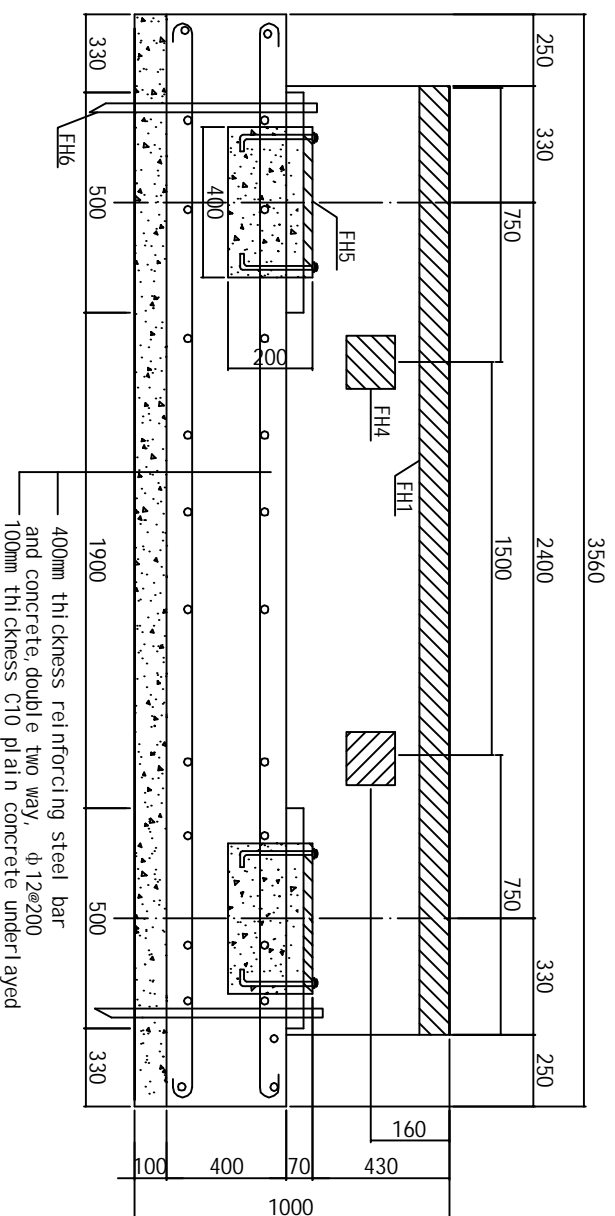


- 15mm thickness 1:2 cement-sand mortar hand <1:10 gradient
- 200mm thickness C20 concrete
- tamping with 150mm thickness detritus
- tamping with soil

Symbol	Symbol	Explanation
	FH1	square steel (50*50*5mm)
	FH2	100xØ 8 round steel bended to hooks
	FH3	Limit board (6*150*150mm) welding 4PCS FH2
	FH4	Specification of Limit board same as FH3 embedding 4PCS
	FH5	16*300*300mm of Load-bearing plate welding 4 PCS M4*150 bolt to fix
	FH6	Conductive pole, dimension $\geq \phi 12$, length ≥ 1250 mm

Remark

M-M2 Cutaway Drawing



- 400mm thickness reinforcing steel bar and concrete, double two way, $\phi 12@200$
- 100mm thickness C10 plain concrete underlaid

- 1 All figures in the pictures are millimeter for the unit, height of natural floor ± 0
- 2 Designed foundation bearing capacity $\geq 60\text{kn/m}^2$
- 3 Concrete $\pm C20$, "Hoop steel" of reinforcing steel bar should be round steel, others whorl steel, underlay C10 concrete 100mm thickness
- * 4 Reinforce foundation according to carrying capacity of local soil and water level to avoid the foundation to go down, our pictures are just for your reference.
- 5 Relative error of centre of each bearing plate (front and back, left and right, diagonal) $\leq 10\text{mm}$
- 6 Surface of every bearing plate at the same level, error $\leq 3\text{mm}$, suggesting bearing plates irrigated twice to keep accuracy.
- 7 Embedding hollow plastic pipes at the same time with foundation construction.
- 8 The foundation place should be higher in the middle, lower at both sides to facilitate drainage (suggesting drainage holes use $\phi 150$ pipes' single-hole or porous)
- 9 Conductive pole embedded next to foundation, and some buried near the pound house, indicator separately grounding (dimension of conductive pole $\geq \phi 12$, depth of embedding $\geq 1200\text{mm}$, outer from cement ground 50mm).

Design		Shanhe Scale Co. Ltd.	
Draw		Audited	SCS-3 m x 18 m
Correct		Date	Pitless Foundation Draw
			Page 2